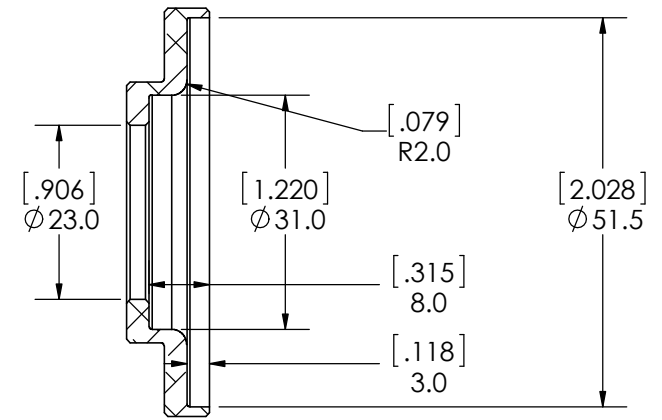
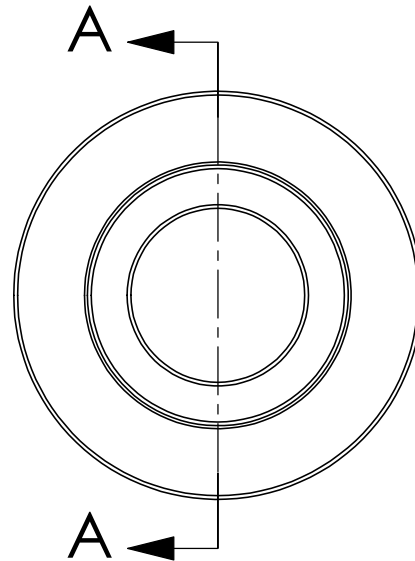
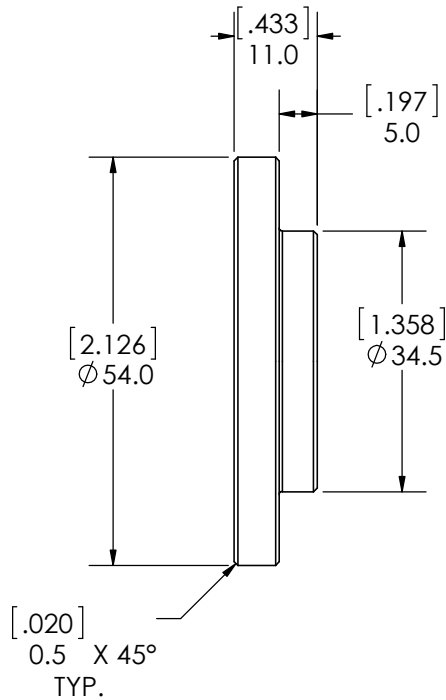
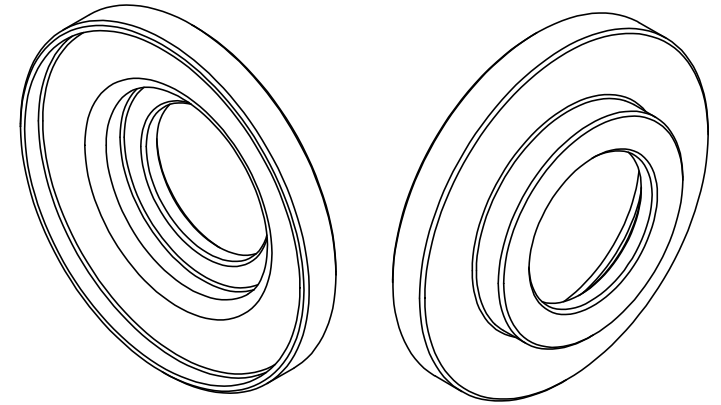


DEBURR ALL

REV.	REVISION DESCRIPTION	REDRAWN	APPROVED
*	*	*	*



SECTION A-A

TOLERANCES: Dimensions are in
 0 = ± .5 MILLIMETERS [IN.]
 0.0 = ± .1 unless specified
 0.00 = ± .05

The information contained in this drawing is the sole property of Race Tech. Any reproduction in part or whole without written permission is prohibited.

RACE TECH

1501 Pomona Road, Corona, CA 92880
 951.279.6655 fax: 951.279.7171

SK SEAL HEAD SPRING SEAT-YAM 1975 250MX

MATERIAL:	6061-T6 ALUM	DRAWN:	PT 2-13-15	SCALE:1:1	PART NO. SPSH SS225134	FINISHED P/N *	DWG. NO.	REV.
FINISH:	*	APPROVED:	*	SHEET 1 OF 1	FILE SPSH SS225134 SPRING SEAT.slddrw		2340	*
COLOR:	*	VENDOR#:						