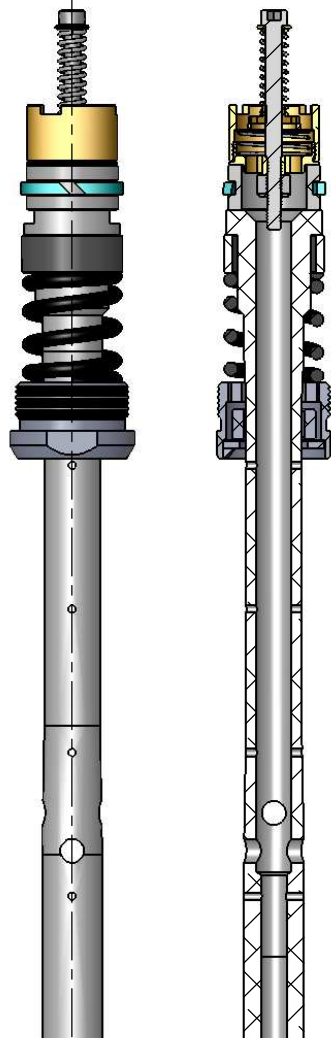


REV.	REVISION DESCRIPTION	REDRAWN	APPROVED
*	*	*	*

D

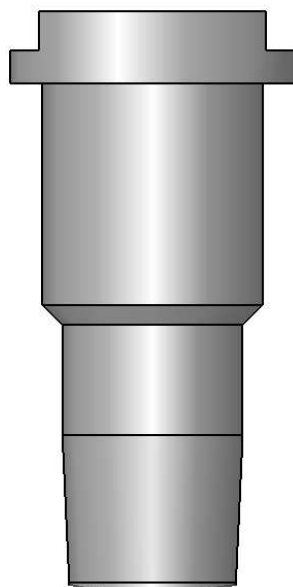
USE FPEV AD3005, FPPR 263322, FEGV 3001 EMULATORS



SECTION D-D

WELD OR EPOXY THESE TOP SETS OF REBOUND HOLES ABOVE THE COMPRESSION HOLES.

COUNTERSINK FIRST FOR BOTH METHODS.



DETAIL B  
SCALE 1.5 : 1

DRILL ID TO BELOW LOWER SET OF COMPRESSION HOLES

[.610]  
Ø 15.5  
45° CHAMFER

[.374]  
Ø 9.5 (3/8")

[6.890]  
175

[.250]  
Ø 6.4  
(4) HOLES TOTAL

[1.969]  
50  
STK

[.394]  
10.0

SECTION A-A

NOTE: THE TOP-OUT SPRING MUST BE PRESS FIT ONTO THE DAMPING ROD. IF IT IS NOT, THE END COIL MUST BE HEATED AND SLIGHTLY REDUCED IN DIAMETER SO THAT IT DOES.

TOLERANCES: Dimensions are in MILLIMETERS [IN] unless specified  
 0 = ± .5  
 0.0 = ± .1  
 0.00 = ± .05

The information contained in this drawing is the sole property of Race Tech. Any reproduction in part or whole without written permission is prohibited.

**RACE TECH**

1501 Pomona Road, Corona, CA 92880  
 951.279.6655 fax: 951.279.7171

DAMPING ROD MOD - 35mm HUSKY 1972 CR

MATERIAL:	ALUMINUM	DRAWN:	PT 4-1-15	SCALE:1:2	PART NO. FPDR 35HUSQ1972	FINISHED P/N *	DWG. NO. 2364	REV. *
FINISH:	*	APPROVED:	*	SHEET 1 OF 1	FILE FPDR 35HUSQ1972 HUSKY EARLY STK-MOD.slddrw			
COLOR:	*	ECR#:	*					