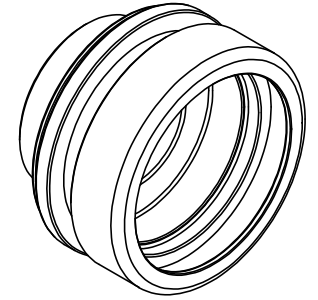
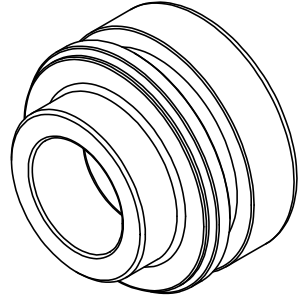
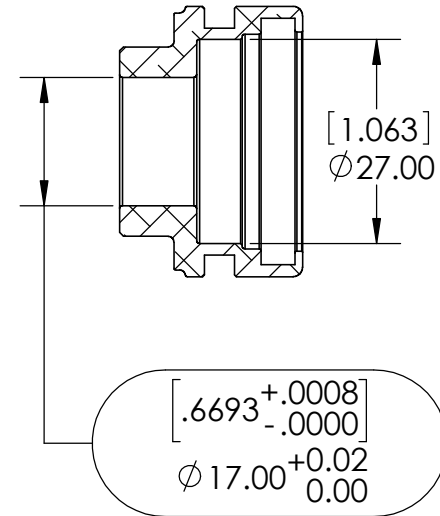
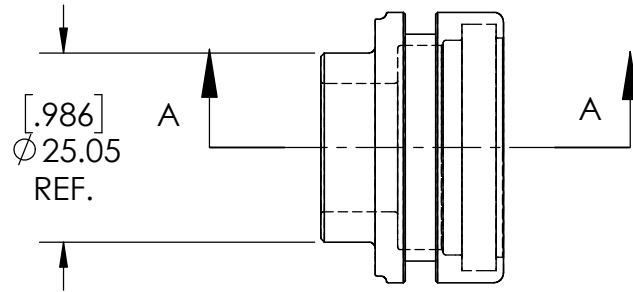
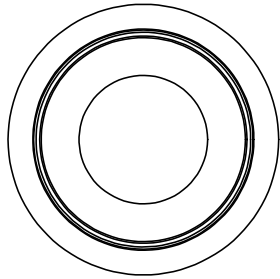


BREAK ALL EDGES
 USE SPTO 1633 T/O BUMPER, SMSB 1510 BUSHING,
 HPSP 175280025, HMOR 3530, SSDS 14, SSOS 14,
 SPLS 163302 - ASSU P/N SASH 361501

REV.	REVISION DESCRIPTION	REDRAWN	APPROVED
*	*	*	*



BMW 16 R1200GS MOD



TOLERANCES: Dimensions are in
 0 = ± .5 MILLIMETERS [IN]
 0.0 = ± .1 unless specified
 0.00 = ± .05

The information contained in this drawing is the sole property of Race Tech. Any reproduction in part or whole without written permission is prohibited.

RACE TECH

1501 Pomona Road, Corona, CA 92880
 951.279.6655 fax: 951.279.7171

SEAL HEAD 36 x 15 x 17L w/BUMPER MOD

MATERIAL:	6061-T6 ALUMINUM	DRAWN:	PT 2-19-18	SCALE:1:1	PART NO. SPSH 3615001	FINISHED P/N *	DWG. NO.	REV.
FINISH:	*	APPROVED:	*	SHEET 1 OF 1	FILE SPSH 3615001 -Seal-Head-36x15 MOD R1200GS.slddrw		2688	*
COLOR:	*	VENDOR#:						